

BOWEN UNIVERSITY, IWO
DEPARTMENT OF BIOLOGICAL SCIENCES
2010/2011 FIRST SEMESTER EXAMINATION
BLY 114: PLANT DIVERSITY

Answer questions **ONE** and any two others. Answers should be well-illustrated where appropriate. Time: 2hrs 20 mins

1. (a) Make a well-labelled diagram of a typical bacterial cell and enumerate the distinctive characteristics of bacteria.
- (b) List **four** economic importance of algae
- (c) Mention **four** major characteristics of pteridophytes
- (d) Differentiate between Rhodophyceae and Phaeophyceae
- (e) Identify **A – F** in Figure 1 and state the functions of **G** and **H**

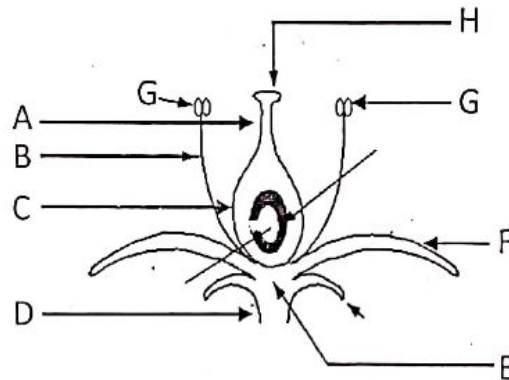


FIGURE 1

(30 Marks)

2. (a) List the general characteristics of fungi
 - (b) Describe the structure of *Rhizopus stolonifer* and list its characteristic features. (20 Marks)
3. Write briefly on any **three** of the following morphological forms of algae
 - (a) Filamentous form
 - (b) Siphonous form
 - (c) Parenchymatous form
 - (d) Aggregation form
 - (e) Colonial forms (20 Marks)
 4. (a) Discuss excretion in plants
 - (b) State **five** differences between gymnosperms and angiosperms (20 Marks)
 5. (a) Classify the bryophytes stating the class, order, family and one example each
 - (b) Draw and label the moss plant
 - (c) State the function of any **two** of its parts (20 Marks)