

BOWEN UNIVERSITY, IWO
DEPARTMENT OF BIOLOGICAL SCIENCES
2011/2012 SECOND SEMESTER EXAMINATION

BLY 115: ORGAN SYSTEMS IN FLOWERING PLANTS

INSTRUCTION: Answer ALL questions.

Time: 2hr 20 mins

Name _____

Matric No: _____

Department _____

Programme _____

SECTION A

1. List **two** functions of each of any **three** vegetative organs in plants

Organ	Functions
(a)	(i)
	(ii)
(b)	(i)
	(ii)
(c)	(i)
	(ii)

(9 Marks)

2. Draw and label:

(a) Spike inflorescence and simple raceme inflorescence

(b) State a difference between the two

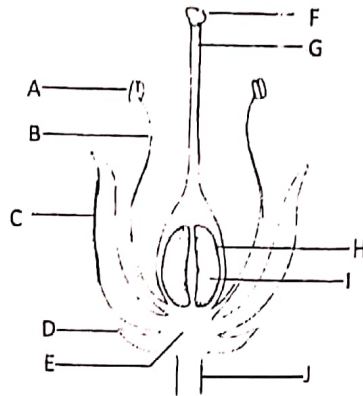
(6 Marks)

Name _____ Matric No: _____

3. State two differences between monocot and dicot leaves (4 Marks)

S/no	Monocot	Dicot
i		
ii		

4. Identify a – j in the following diagram



a _____
 c _____
 e _____
 g _____
 i _____

b _____
 d _____
 f _____
 h _____
 j _____

5. State the functions of the following labelled parts, in the diagram above

- (a) _____
- (b) _____
- (c) _____
- (d) _____

6. Define, give the function and example of a leaf tendril (7 Marks)

Definition: _____

 Function: _____
 Example: _____

Name _____ Matric No: _____

SECTION B

1. Roots take their origin from _____
2. Roots can be divided into _____ and _____
3. Shoot system developed from _____
4. Space between two successive nodes is called _____
5. The arrangement of leaves is called _____
6. The point on the stem or branch where one or more leaves arise is known as _____
7. The angle formed between the upper side of the attachment of a leaf and the stem above is the _____ of the leaf and buds formed at this point are _____
8. A flower is a _____ shoot
9. _____, _____, _____ may develop into flowers instead of leafy shoots.
10. Mention **two** characteristics of a stem
 - (i) _____
 - (ii) _____
11. _____ and _____ are the two major forms of stem.
12. Mention **two** characteristic features of an aerial part of axis of vascular plants
 - (i) _____
 - (ii) _____
13. What are the major differences between the two forms of stem?

14. Plants that lie on the ground are said to be _____ but when the branches of such plants after trailing for some distance tend to rise at their apex, they are said to be _____
15. Climbers climb by means of some special organs of attachment namely
 - (i) _____, (ii) _____, (iii) _____ and
 - (iv) _____
16. List **two** functions of stem
 - (i) _____
 - (ii) _____

Name _____ Matric No: _____

17. List **two** differences between a tree from shrub?

(i) _____

(ii) _____

18. Parasitic plants penetrate the tissue of the host plant and suck nourishment from it through their _____

19. Moniliform roots are _____